

# Installation Guide for Zurotech TV Tuner Card

## Cable Connection Chart



## System Requirements:

- CPU: Pentium 3, 500Hz or above
- Operation System: Windows 2000 or Windows XP
- Interface: PCMCIA
- Memory: 64 MB
- DirectX 8.1 or above
- CD-ROM or DVD-ROM Drive
- 500 MB of available hard disk space or above

## Installation Tips:

1. Make all of the connections to the card (as shown in the **Cable Connection Chart**) before putting the card into the PCMCIA slot.
2. Do not remove any connections to the card while running it.
3. If **Found New Hardware** pop-up dialog box appears, click **Cancel**.

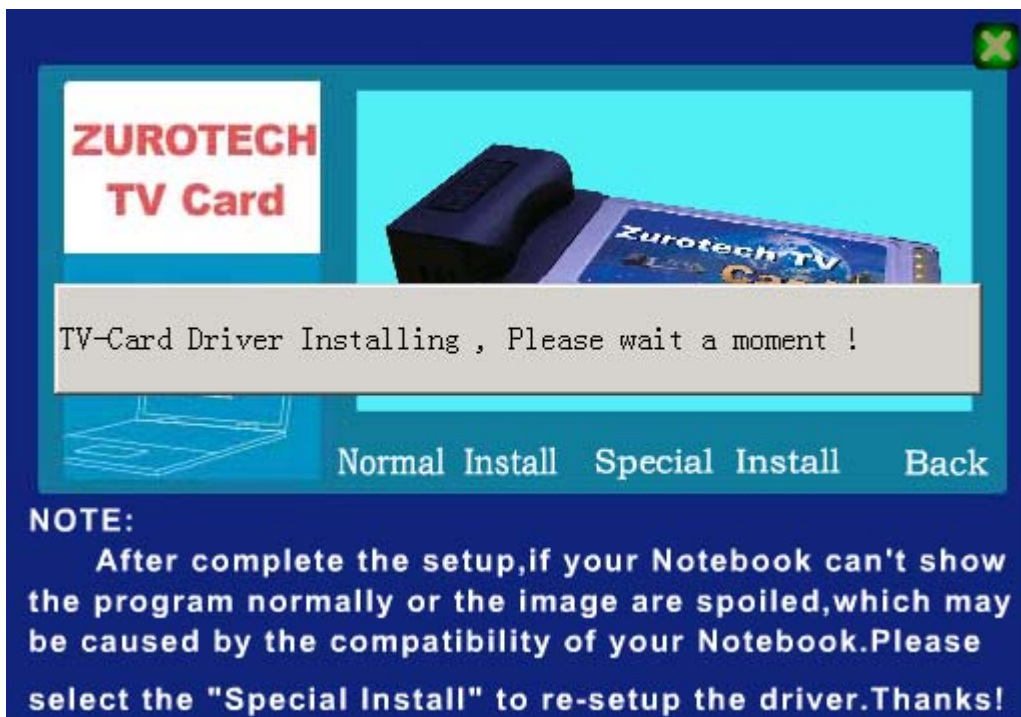
## Installing the Zurotech TV Tuner Card Driver for Windows 2000 or XP

First, you need to make sure that all the connections to the Zurotech TV Tuner Card are linked as shown above. Then put the Zurotech TV Tuner Card in the PCMCIA Slot. Click **Cancel** if the **Found New Hardware** box appears. Then place the Driver CD into the CD-ROM drive. The main installation screen should appear. If it does not appear, Autorun may have been disabled. You may launch the Autorun manually by double-clicking the AutoRun.exe file in the Driver CD.

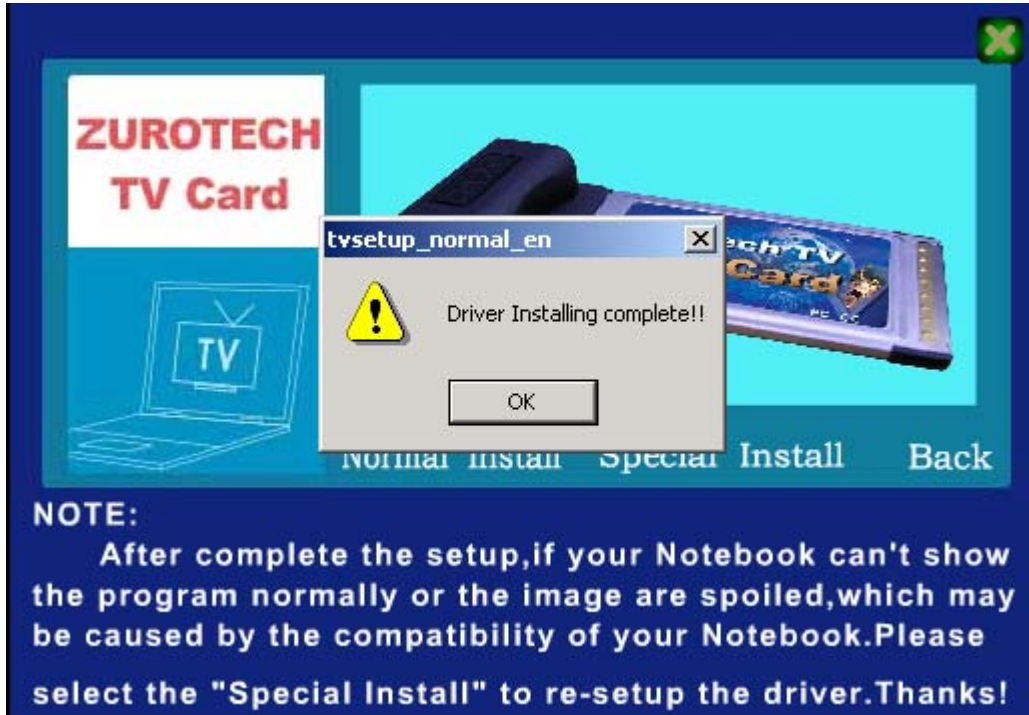
1. Select your preferred Language. Then, click Install Driver to install the TV card driver.



2. Select the Installation type: **Normal** or **Special**. Then wait for the installation to complete.

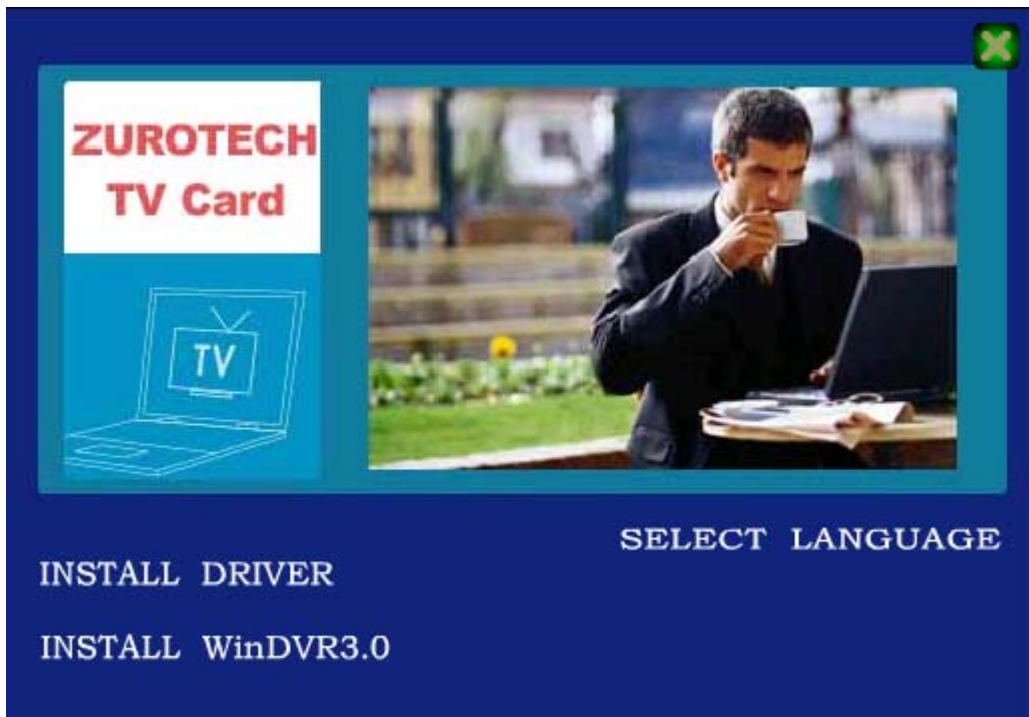


3. Click **OK** to finish the Driver installation. Then, click **Back** to return to the previous menu.

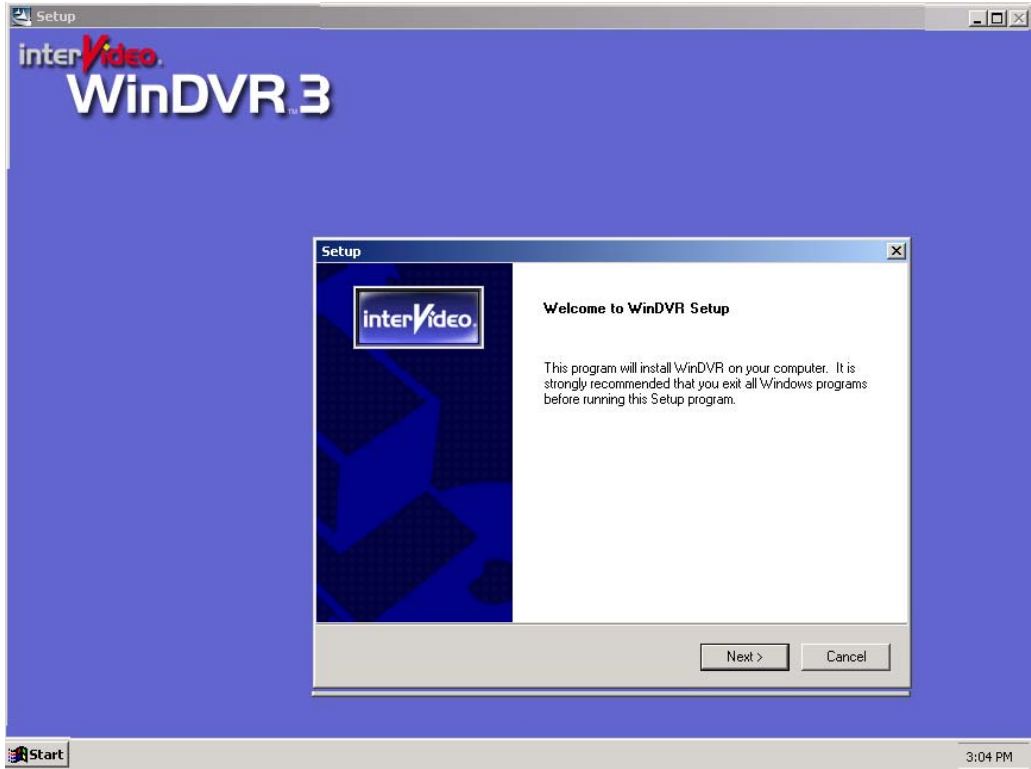


### Installing WinDVR 3.0

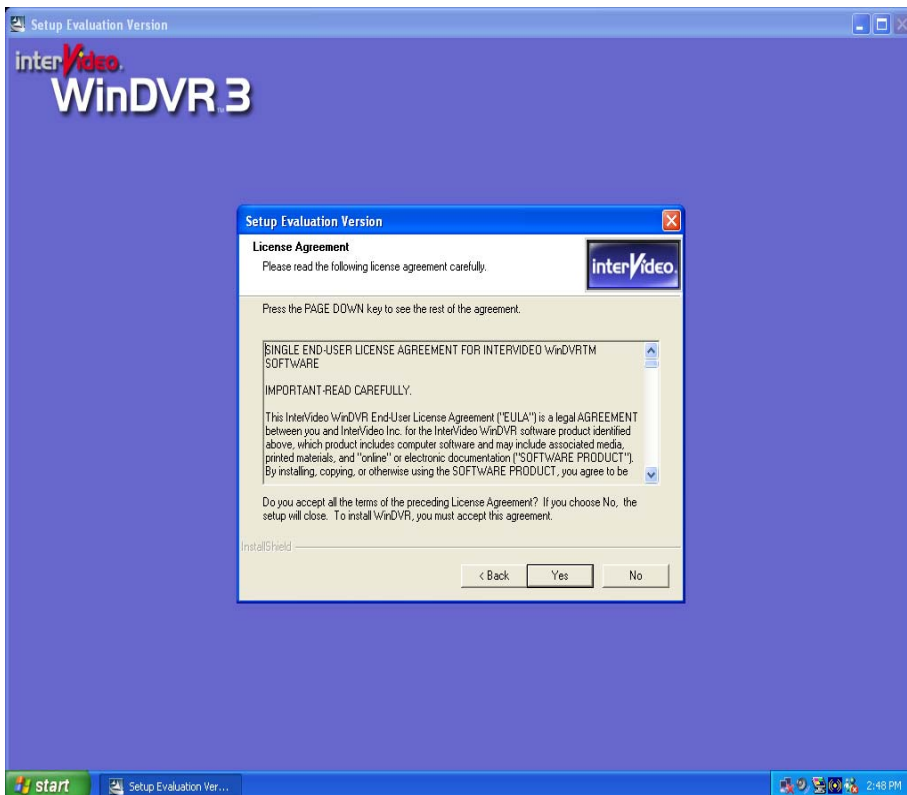
1. Click the **Install WinDVR 3.0** to install the application software. (This feature may take a few minutes.)



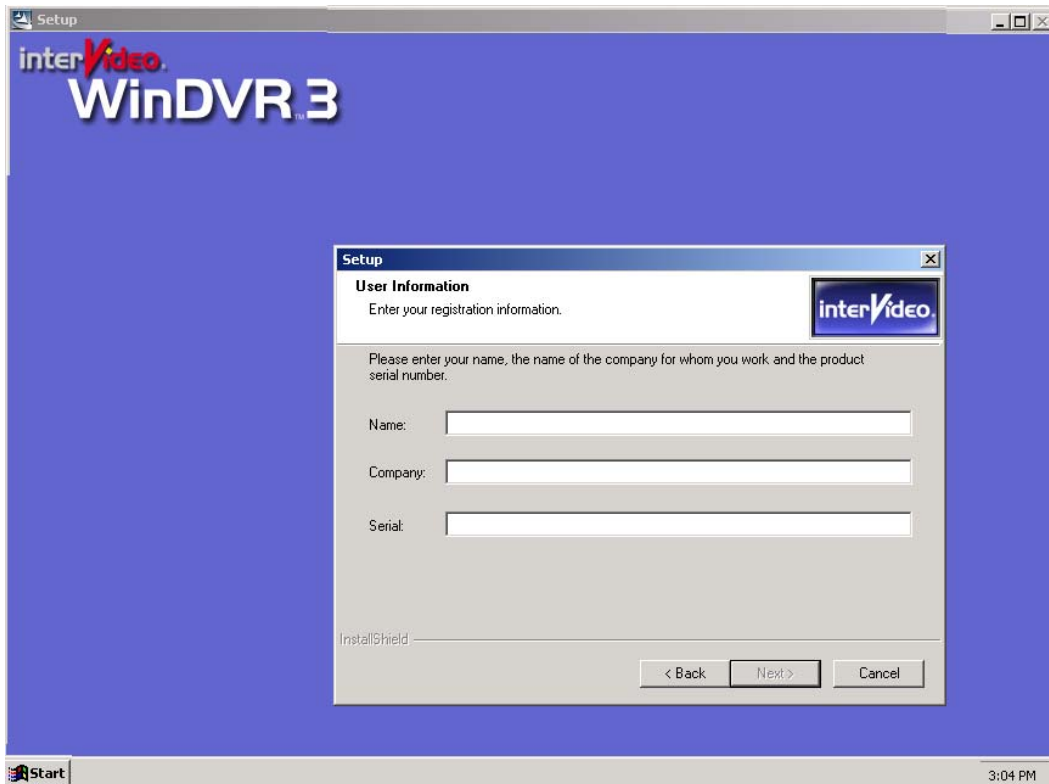
2. Click **Next** to continue.



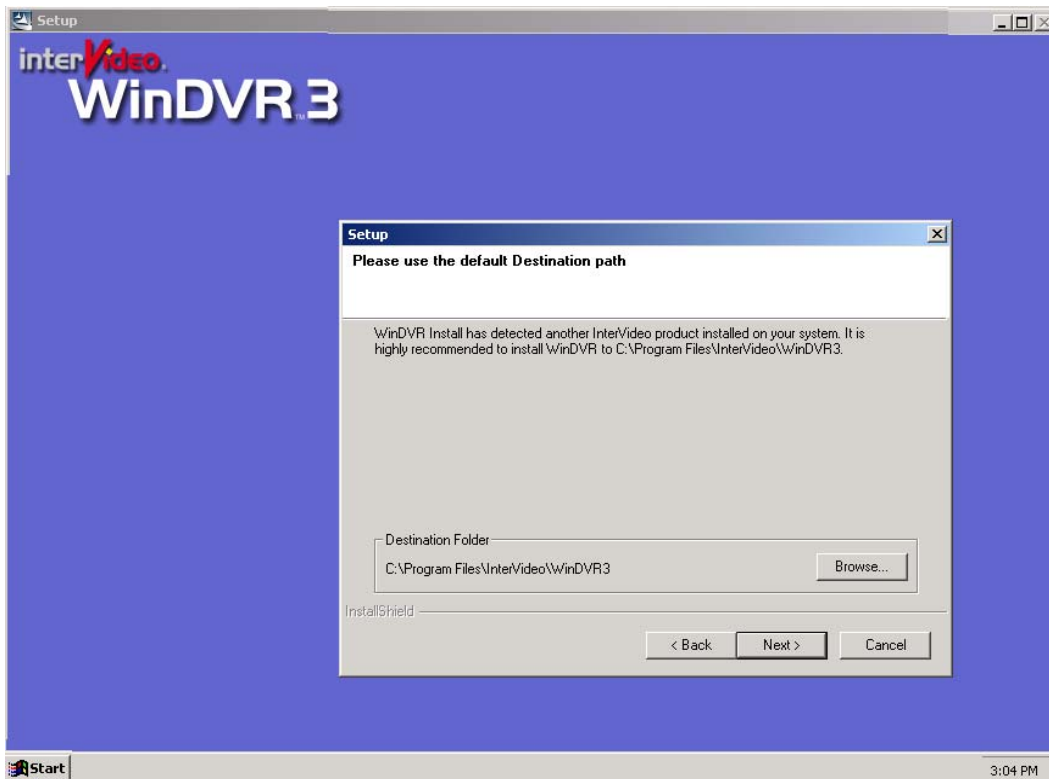
3. Click **Yes** to continue.



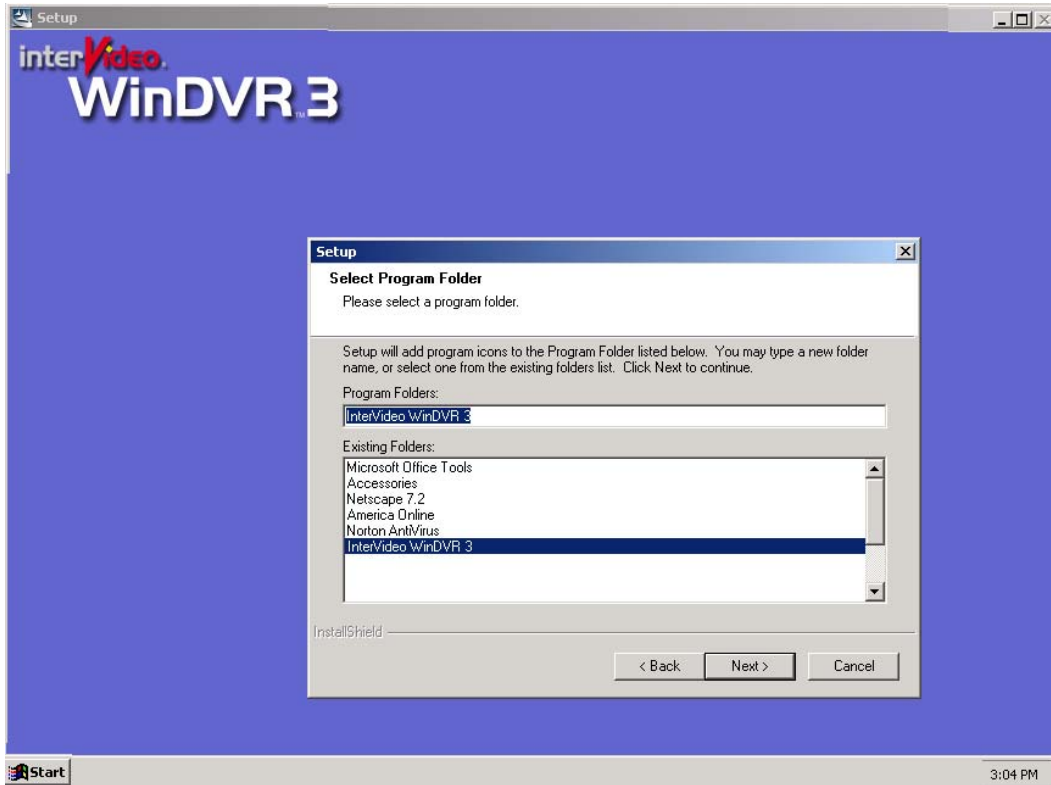
4. Enter the requested information: **Name**, **Company**, product **Serial** number (serial number may be found on the back of the CD sleeve).



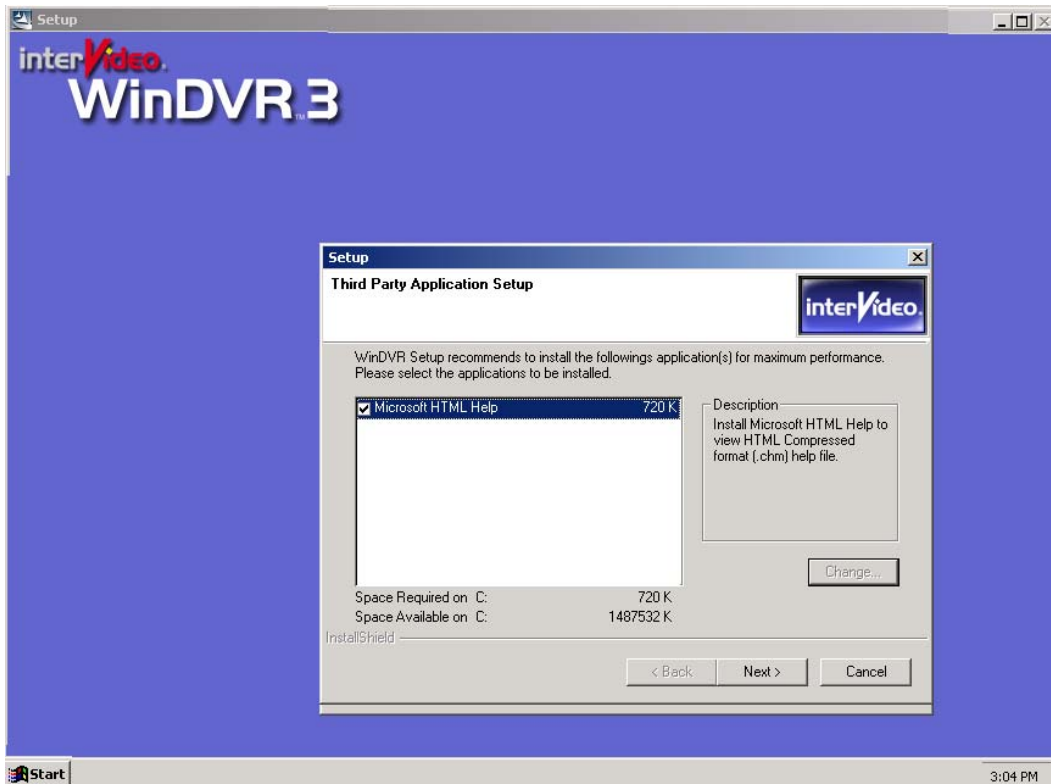
5. Check that the destination folder is correct. Then, click **Next** to continue.



6. Click **Next** to continue.

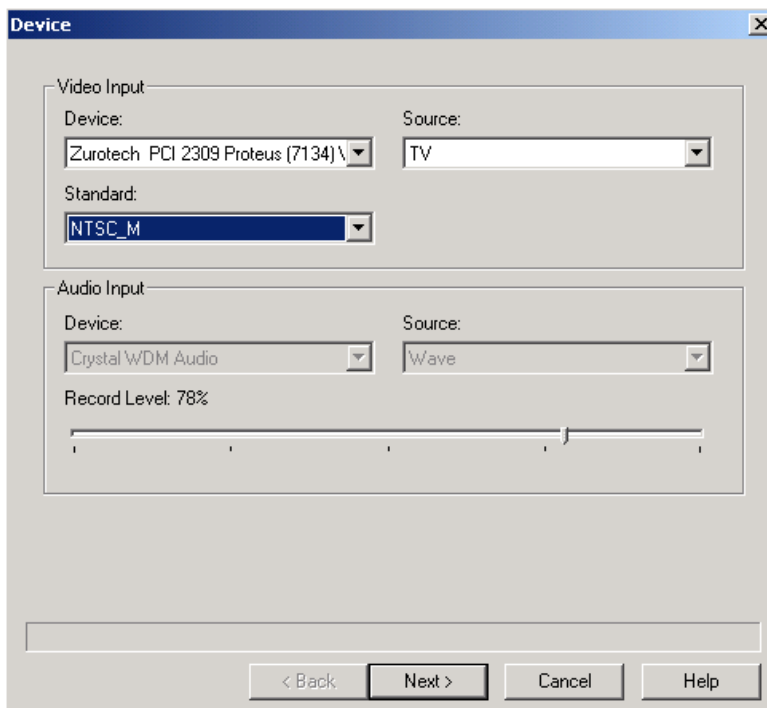


7. Click **Next** and then the system will finish the setup of WinDVR3.0.

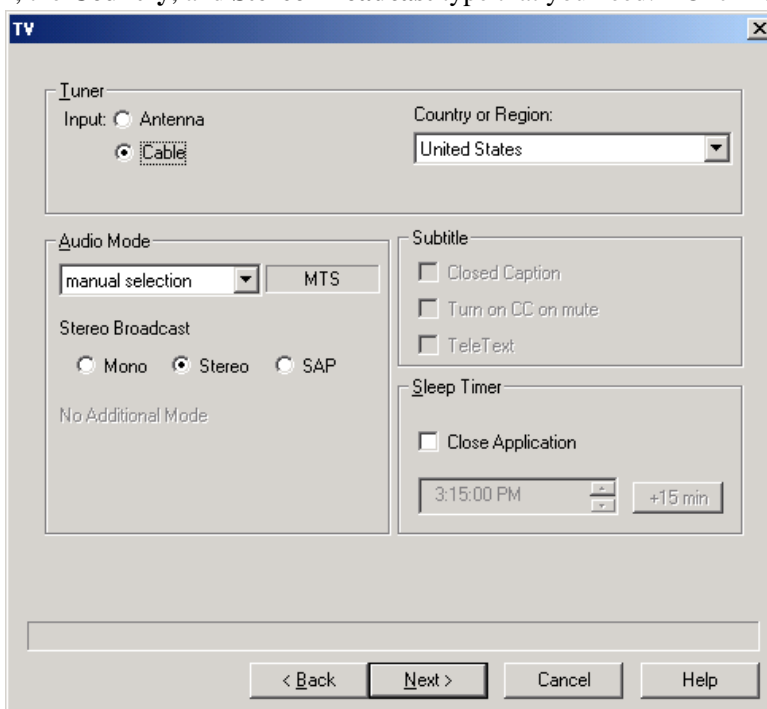


## Application of the Smart TV Card

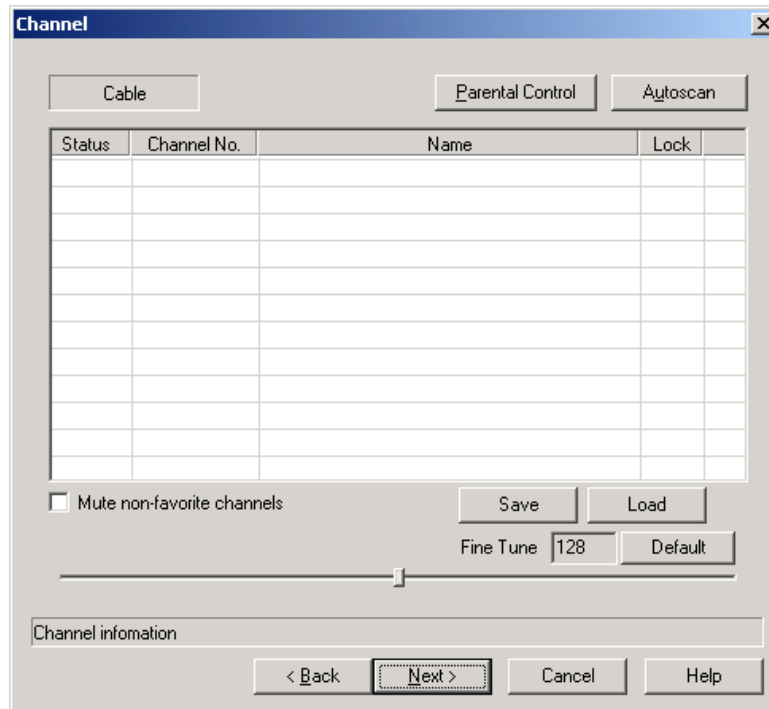
1. Double click the icon of **InterVideo WinDVR 3.0** on the desktop, after a while the **Device** dialog box will appear as shown below. Make sure that the Zurotech device is selected, and choose the **Standard** used in your country. Click **Next** to continue.



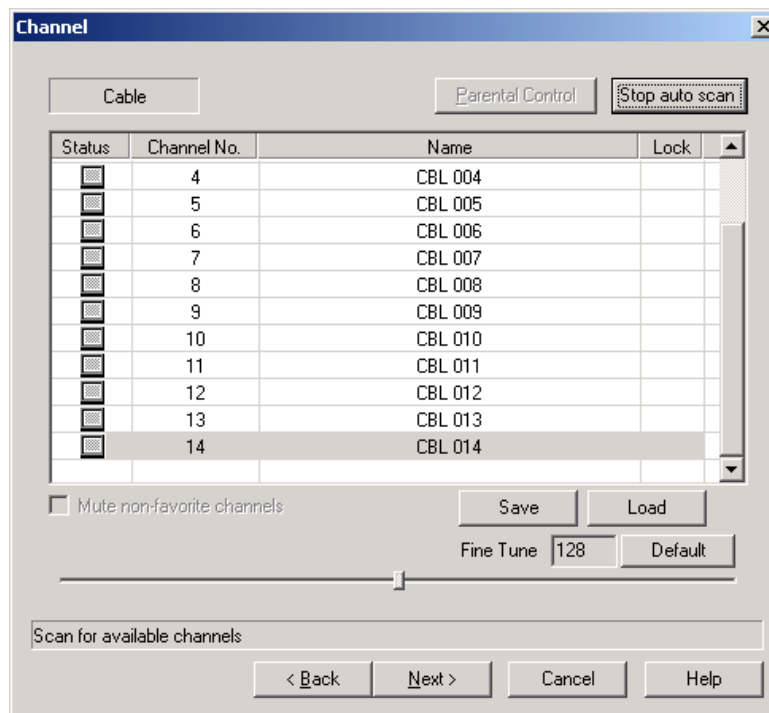
2. Choose the **Tuner**, the **Country**, and **Stereo Broadcast** type that you need. Click **Next** to continue.



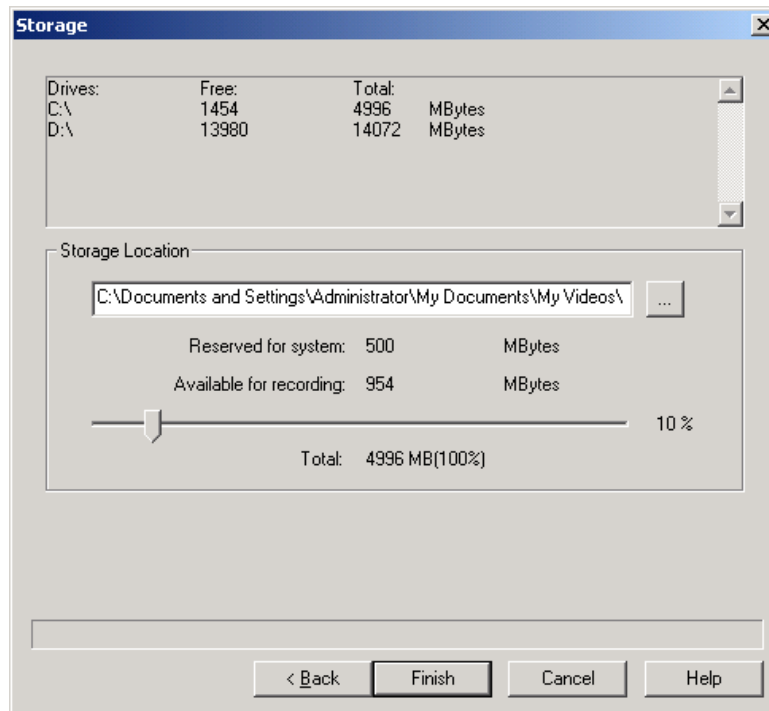
3. This shows the TV Channel line-up. Click **Auto Scan** to scan for the available TV channels.



4. After the scan has finished, click **Next** to continue.



5. Choose the **Storage Location** and adjust how much memory space you would like to allocate. Click **Finish**. *Now you can enjoy the TV programs with the Zurotech TV Tuner Card.*



### **Zurotech TV Tuner Card Hardware Specifications:**

- Philips TDA8290, TDA8275 New Silicon Tuner
- TV standard: NTSC/ PAL / SECAM
- Video Input: TV, S-Video, Composite
- Video Resolution: 720x576 (PAL) 720x480 (NTSC)
- Video Capture rate: 25 frames/second (PAL) and 30 frames/second (NTSC)
- Audio: NICAM/BTSC/Stereo/Mono
- Hardware Interface: Card Bus